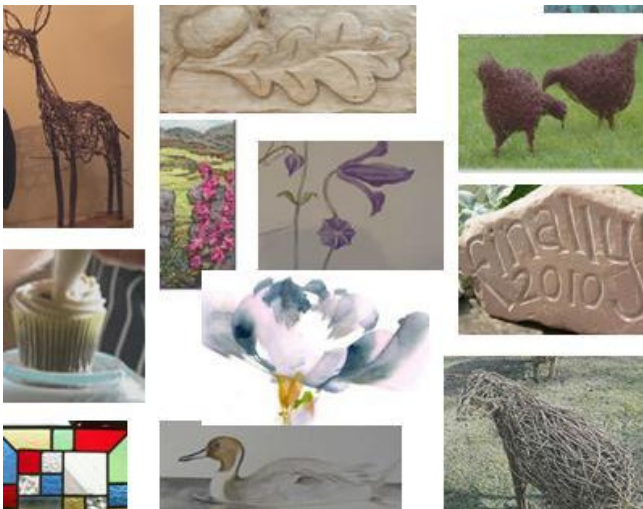




A Special Day for Your pre Wedding Celebration

Best Memories come from Shared Experiences. Enjoy a very different day & make something that lasts forever c/w lovely food and surroundings.

Book early for 2012 -also lovely S/C lodge accommodation for up to 18 at Stafford House, a Victorian folly in the grounds of Greystoke Castle.



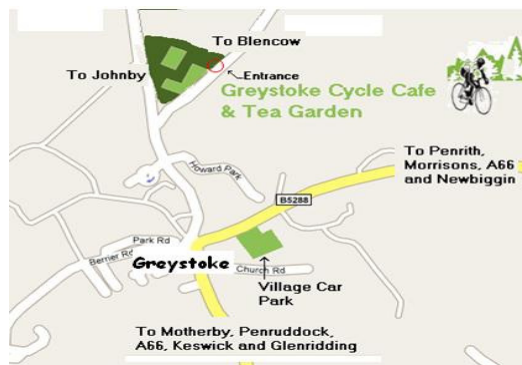
Cafe Opens Easter to end Sept

for **CYCLISTS** arriving on Bikes Everyday 10 - 6pm in season our Dedicated Cyclists' Barn* opens exclusively for You . . . complete with hot drinks/cakes and maybe much more.

To All Others Fri 12-6pm Sat 10-6pm and the 2nd Sun of the month 10-6pm. Please use village c/park & enjoy a short walk to the Café.

Our limited Café parking is only available to Cycle Support and Workshop attendees Vehicles.

We serve hot & cold Light Lunches, tasty Pasta dishes and Soups, Cream Teas, Home Made Cakes, Cordials, large mugs of Tea, real Coffee and more. Spacious Cottage Gardens front and back with lovely Castle views . . . we're ideal for Families. A Defra Permissive Access walk in the Castle grounds is displayed in the corner of Greystoke car park.



Greystoke Cycle Cafe Tea Garden

017684 83984

Greystoke, Penrith Cumbria CA11 OUT
4 miles west of Penrith and J40 M6

'Perfectly Printed' by Reeds of Penrith 01768 864214

Greystoke Cycle Cafe

Quirky 2012 (prov) Workshops



Another full and exciting year ahead

A fabulous range of courses in Art, Heritage Skills Sculpture Beekeeping & many more in a unique rural setting at our C17th Cumbrian farmhouse.

Treat yourself to a friendly informal, relaxed day out with lovely food & drink included. Learn and create something Special to take away

017684 83984

www.greystokecyclecafe.co.uk

'Always walk through life as if you have something new to learn - and you will'

Quirky Workshops at Greystoke

Call to book & for last minute spaces.

2012 •
updated 9/1

017684 83984



All Day Courses include refreshments & a lovely two course lunch in our farmhouse kitchen or on the Cycle Café Lawn looking towards Greystoke Castle. There are many more courses online. For a comprehensive guide why not visit www.greystokecyclecafe.co.uk

Gift Vouchers available Online
Quirky Days making Special Treats
Please enquire for last minute spaces.

017684 83984

Materials are charged extra. All Courses are suitable for ALL abilities including Beginners ...except those in purple.

Jul	Fri	6 th	Willow Sculptures - Deer	£58
	Sa-Su	7-8 th	Art. Blacksmithing – 2 day Course Beg/ Intermediate	£210
	Tu-We	10-11 th	Dry Stone Walling per day	£58
	Sat	14 th	Cloisonné Enamelling in a Day	£78
	Mon	16 th	Painting on Vellum - Colin Swinton	£60
	Tue	17 th	Watercolour Landscapes on a Textured Surface -Jesso	£60
	Wed	18 th	Botanical Illust. in Style of Charles Rennie Mackintosh	£60
	Fri	20 th	Greenwood Spoon Carving with David Alty	£56
	Tu-Fr	24-27	Wildlife & Botanical Illust. Simon Williams SBA	£70
	Sat	28 th	Strip and Build Bike Day – Steve Woods	£70
	Sat	28 th	Punctures Made Easy . .Bike course for Begg 5-7.30pm	£24
Aug	Fri	3rd	Far Eastern Brush Painting Animals/Flowers Irene Sanderson	£60
	Sat	4th	Shades of Summer Beg/ Int. Watercolours –M Jarvis	£56
	Fri	10 th	Artistic Blacksmithing for Beginners	£115
	Sat	18 th	Green Pole Lathe Wood Turning Chris Helliwell	£75
	Tu-Th	21-23rd	Three day Stone Carving - Intermediates	£180
Sep	Sat	29 th	Artistic Blacksmithing for Beginners	£115
Oct	Wed	3 rd	Green Wood Spoon Carving with David Alty	£56
	Thu	4 th	Relief Carving in Hardwood Alistair Neville	£68
	Tue	9 th	Green Pole Lathe Wood Turning Chris Helliwell	£75
	Wed	10 th	Willow Sculptures with Phil Bradley . . . Pigs	£80
	Fri	12 th	Rag Rug Making with Emma Tennant	£65
	Sa-Su	13 th -14 th	Two Day Silver Jewellery Making – all abilities	£145
	Tue	23 rd	Painting & Drawing the HORSE (discount 14-18 y-olds)	£60
	Wed	24 th	Winter Scarf Weaving on a Hand Loom – Jan Beadle	£68
Nov	Tue	6 th	Rag Rug Making with Emma Tennant	£65
	We-Th	7 th -8 th	Making a Felt Hat 2 day Workshop. Ewa Kuniczak	£130
	Th-Fr	15 th -16 th	Sea Grass & Cane 2 day Restoration Workshop	£130
	Mo-Tu	19 th -20 th	'Make A Stained Glass Panel' 2 day Workshop	£135
	Thu	22 nd	Far Eastern Brush Painting –Flowers or Animals Irene Sanderson	£60
	Fri	23 rd	Willow Sculptures – Hens & Cockerels	£58
	Tue	27 th	Shibori Scarf Weaving on a Hand Loom – Jan Beadle	£68
Dec	Mon	3 rd	Christmas Cards in Pen & Wash (beg/int) M Jarvis	£48
	Fri	7 th	Stencilled Enamels Inspired by Nature	£75
	Tu/We	11 th /12 th	Willow Sculptures – Angels per day	£60



Feb	Mon	20 th	Brush up on your Watercolours (beg/int) MJ	£54
	Wed	22 nd	Scrumptious Scone Making Gill Harris	£66
	Thu	23 rd	Cup Cake Heaven –	£68
	Wed	29 th	Gluten-free Cookery Gill Harris	£68
Mar	Mo-Fr	5-8 th	Wildlife & Botanical Illust. Simon Williams	£70 p day
	Wed	14 th	Bread Making by Hand Gill Harris	£68
	Thu	15 th	Living Willow Arbours and Lattices	£60
	Sa-Su	31-1 st	Two day Bee-Keeping Course	£175
Ap	Wed	4 th	Hands-on 'Strip & Build Bike' Day	£70
	Wed	4 th	Bike Maintenance for Beginners (6-8.30)	£24
	Thu	5 th	Drawing & Painting the Horse	£40/£60
	Fri	6 th	Bee Friendly Beekeeping (Dr David Heaf)	£80/£105
	Sun	8 th	Green Pole Lathe Wood Turning	£74
	Sa-Su	14-15 th	Two day Bee-keeping Course	£175
	Sat	21 st	Artistic Blacksmithing for Beginners	£115
	We	25 th	Punctures Made Easy Bike Maint. for Begg 5- 7.30	£24
May	We	9 th	Willow Sculptures – Wigwags	£58
	Thu	10 th	Willow Sculptures – Hares	£58
	Fri	11 th	Make a Ceramic Mythical Green Man	£60
	Sa-Su	12-13 th	Make your own Warre Beehive	£215
	Tue	15 th	Relief Carving in Hardwood	£68
	Wed	16 th	Cobbling Day (Heritage Skills Initiative) see website	
	Thu	17 th	Watercolours – Shades of Spring (beg/int)	£56
	Fr-Su	18-20 th	Artistic Blacksmithing – Your Own Design	£285
	Mon	21 st	Stencilling Nature into Enamel	£78
	We-Th	23-24 th	Stained Glass Panels – for all standards	£135
	Mo-We	28-30	Stone Carving (3 days).-Beginners	£180
Jun	Fri	1 st	One Day Silver Jewellery Making (beg/int)	£78
	Sa-Su	2-3 rd	Two Day Silver Jewellery Making (beg/int)	£145
	Fri	8 th	Drawing & Painting the Horse	£40/£60
	Sun	10 th	Artistic Blacksmithing for Beginners	£115
	Mon	11 th	Willow Sculptures – Sheep (life-size)	£85
	Tue	12 th	Willow Sculptures – Hens & Cockerels	£58
	We/Th	13/14 th	Botanical Illustration with Kay Rees-Davis	£70 pr day
	Sat	16 th	Hands-on 'Strip & Build Bike' Day	£70
	Sat	16 th	Punctures Made Easy Bike Maint. for Begg 5- 7.30	£24
	Mon	18 th	Elderflowers Cordial, Jelly & Cake	£65
	Tu-We	19/20 th	Rush Seating Restoration	£130
	Sat	23 rd	Painting' in Felt Debra Esterhuizen	£65
	Sun	24 th	'Nuno' Scarves Ewa Kuniczak	£65
	Mon	25 th	Felt Fripperies Ewa Kuniczak.	£65
	We-Th	27/28 th	Rag Rug with Heather Ritchie per day	£65
	Fri	29 th	Quirky Scarves Woven on Hand Loom -Jan Beadle	£68

Wire Sculptures Dates still to come

* **Work in Progress: Programme Updated 9.1.12** – some dates are still being finalised/added. During the Spring ongoing changes are listed in the yellow additions to website table and facebook

